

# **Historic, Archive Document**

Do not assume content reflects current scientific knowledge, policies, or practices.



62.59  
FALL, 1904.

SPRING, 1905.

## Wholesale Trade-List

.. OF ..

# SOUTHWICK NURSERIES

### LOCATION.

I am situated on the line of the New Haven & Northampton division of the N. Y., N. H. & H. R. R., 5 miles south of Westfield, Mass., junction of the Boston & Albany R. R.; 100 miles west of Boston, and 100 miles north of New York.

Goods by express reach New York within five hours after shipment, and the cost of carriage to all points from here is comparatively light. Freight goes through to New York without change.

### TERMS.

Prices are in American money. 5 at 10 rates, 50 at 100 rates, 500 at 1,000 rates. Packing at cost.

One dollar is equal in value to a trifle more than four English shillings, four German marks, or five francs.

All bills will be due upon receipt of goods, unless by special agreements. Unknown parties should give good references.

Remit by draft on New York, or by Post Office Order on Southwick, Mass. *Foreign Remittances by International Post Office Orders on Westfield, Mass.*

The packing season commences as soon as the plants can be got at in spring, about April 10, and lasts about six weeks, and in autumn as soon as the plants are ripe, mostly from September until December.

Address all communications to

**EDWARD GILLETT,**

SOUTHWICK, MASS., U. S. A.

### CONTENTS.

	Page
Deciduous Trees and Shrubs, . . . . .	2
Evergreen Trees and Shrubs, . . . . .	6
Vines and Creepers, . . . . .	7
Herbaceous Perennials, . . . . .	7
Bog and Aquatic Plants, . . . . .	12
Orchids, . . . . .	13
Ferns, . . . . .	14
Club Mosses, . . . . .	15
Special Collection of Ferns, . . . . .	16

COMMONWEALTH OF MASSACHUSETTS.

STATE BOARD OF AGRICULTURE.

OFFICIAL CERTIFICATE No. 5.

BOSTON, Aug. 9, 1904.

TO WHOM IT MAY CONCERN :

THIS IS TO CERTIFY that I have this 9th day of August, 1904, completed the inspection of the nursery stock of Edward Gillett, grown at Southwick, State of Massachusetts, and find it to be apparently free from the San Jose Scale and other injurious insects and diseases which might be transferred on nursery stock from the nursery to the orchard or garden.

This certificate is good until July 1, 1905.

(Signed)

H. T. FERNALD, Inspector.

**EDWARD GILLETT,**

Southwick, Mass., U. S. A.

Long Distance Telephone.



# Deciduous Trees and Shrubs.

Nursery Grown Stock, except where noted.

Coll. signifies Collected Plants. S. seedlings in seed bed.

	10	100	1,000
<b>ACER Pennsylvanicum</b> (Striped Maple)—			
3 ft.,	\$1 50		
2 to 3 ft. Coll.,	75	\$4 00	
<b>saccharinum</b> (Sugar Maple)—			
5 to 6 ft.,	2 00		
10 to 12 ft.,	3 50		
<b>spicatum</b> (Mountain Maple)—			
2 to 3 ft.,	1 50	8 00	
<b>AMELANCHIER Canadensis</b> (Shadbush)—			
1½ to 2 ft.; strong,	1 25	7 00	
<b>ARALIA pentaphylla</b> . 2 to 3 ft.,	1 50		
<b>AZALEA arborescens</b> —			
8 to 12 in.,	2 00		
1 to 1½ ft.,	3 00		
<b>calendulacea</b> (Flame-colored Azalea)—			
8 to 12 in.,	1 25	6 00	
1 to 1½ ft.,	1 50	12 00	
1½ to 2 ft.,	2 50		
<b>mollis</b> . 1 to 1½ ft.,	2 00		
<b>nudiflora</b> (Purple Azalea)—			
8 to 12 in. X,	1 25	6 00	
1 to 1½ ft.,	2 00		
<b>Vaseyi</b> (Light Pink)—			
6 to 12 in.,	1 25	7 00	
1 to 1½ ft.; well budded,	1 50		
<b>viscosa</b> —			
1 ft.,	1 25	6 00	
1 to 1½ ft.; well budded,	1 50	8 00	
1½ to 2 ft.,	2 00	10 00	
2 to 3 ft.; heavy,	3 00		
<b>BERBERIS purpurea</b> (Purple Barberry)—			
1 to 2 ft.,	75	4 00	
<b>Thunbergi</b> —			
8 to 12 in.,	75	4 00	
1 to 1½ ft.,	1 25	6 00	
1½ to 2 ft.,	1 50		
<b>Sieboldi</b> . 8 to 12 in.,	1 25		
<b>vulgaris</b> —			
1 to 1½ ft.,	75	4 00	
1½ to 2 ft.,	1 25		
<b>BETULA papyracea</b> (Paper or Canoe Birch)—			
2 to 3 ft.,	1 50	8 00	
3 to 5 ft., X,	2 00		
<b>lenta</b> (Yellow Birch). 3 ft.,	1 50		
<b>CEANOTHUS Americanus</b> (New Jersey Tea). 1 ft.,	1 25	7 00	
<b>CEPHALANTHUS occidentalis</b> (Button Bush). 2 ft.,	1 25	7 00	
<b>CERCIS Canadensis</b> . 1½ to 2 ft.,	1 25		
<b>CHIONANTHES virginica</b> . 2 ft.,	1 50		

	10	100	1,000
<b>CLETHRA alnifolia</b> (Sweet Pepper Bush)—			
1½ ft., . . . . .	\$1 00	\$5 00	
1½ to 2 ft.; X, . . . . .	1 25	7 00	
<b>COMPTONIA asplenifolia</b> (Sweet Fern). Coll., . . . . .	50	3 00	\$15 00
<b>CORNUS alternifolia</b> . 2 to 4 ft.; good roots. Coll., . . . . .	1 00	4 00	
<b>circinata</b> . 2 ft., . . . . .	1 50		
<b>florida</b> . 2 to 3 ft., . . . . .	1 50	7 00	
<b>Mas</b> (Cornelian Cherry). 2 to 3 ft., . . . . .	1 25	7 00	
<b>paniculata</b> —			
1 ft., . . . . .	1 00	5 00	
1 to 1½ ft., . . . . .	1 25	6 00	
1½ to 2 ft.; X, . . . . .	2 00	10 00	
2 to 3 ft.; XX, . . . . .	2 50		
<b>sericea</b> . 2 to 3 ft., . . . . .	1 25	5 00	
<b>stolonifera</b> —			
1 to 2 ft., . . . . .	75	4 00	
2 to 3 ft., . . . . .	1 25	6 00	
3 to 4 ft., . . . . .	1 50	8 00	
<b>variegata</b> (Golden). 1½ ft., . . . . .	2 50		
<b>CORYLUS Americanus</b> (Wild Hazelnut). 2 ft. Coll., . . . . .	75	4 00	
<b>CRATÆGUS coccinea</b> , 2 ft., . . . . .	1 00		
<b>CYDONIA Japonica</b> . 1½ ft., . . . . .	1 00	5 00	
<b>DIERVILLA trifida</b> (Bush Honeysuckle). 1 to 1½ ft., . . . . .	1 00	5 00	
<b>DIRCA palustris</b> (Leatherwood). 8 to 12 in., . . . . .	1 25		
<b>EUONYMUS Americanus</b> , var. <b>obovatus</b> , . . . . .	1 00	5 00	
<b>atropurpurea</b> (Burning Bush). 1 to 2 ft., . . . . .	1 50		
<b>radicans</b> . 1 to 1½ ft., X, . . . . .	1 25	6 00	
<b>variegata</b> . 8 in., . . . . .	75	4 00	
<b>FORSYTHIA viridissima</b> . 2 ft., . . . . .	1 00	5 00	
<b>GAYLUSSACIA frondosa</b> (Dangleberry). 6 to 12 in., . . . . .	1 00	6 00	
<b>resinosa</b> (Black Huckleberry)—			
8 to 12 in., . . . . .	1 25	6 00	
<b>HAMAMELIS Virginica</b> (Witch-Hazel)—			
1 to 2 ft., . . . . .	1 00	6 00	
2 to 3 ft., . . . . .	2 00	12 00	
<b>HYDRANGEA arborescens</b> (Wild Hydrangea). 2 ft., . . . . .	1 25	6 00	
<b>radiata</b> . 2 ft., . . . . .	1 50		
<b>grandiflora</b> —			
1 to 1½ ft., . . . . .	1 00	5 00	
1½ to 2 ft., . . . . .	1 25	6 00	
2 to 3 ft., . . . . .	1 50		
<b>paniculata</b> . 1 to 2 ft., . . . . .	1 00	5 00	
<b>ILEX glabra</b> . 1 ft., XX, . . . . .	1 50		
<b>verticillata</b> —			
6 to 12 in., . . . . .	1 00	5 00	
1 to 2 ft., . . . . .	1 25	7 00	
2 to 3 ft.; XX, . . . . .	2 50		
<b>LAURUS Benzoin</b> (Spice Bush)—			
1½ to 2 ft., . . . . .	1 25	6 00	
<b>LIGUSTRUM ovalifolium</b> (California Privet)—			
1 to 1½ ft.; 1 year, . . . . .	50	2 00	
2 ft., . . . . .	75	3 00	

	10	100	1,000
<b>LIGUSTRUM vulgare</b> (Common Privet). 2½ ft.; X,	\$1 00	\$5 00	
<b>LONICERA ciliata</b> (Fly Honeysuckle). 1 ft., . . . . .	1 25		
<b>LYCIUM vulgare</b> . 1 to 2 ft., . . . . .	1 00	5 00	
<b>MYRICA cerifera</b> (Bayberry)—			
8 to 12 in.; trans., . . . . .	1 00	5 00	
1 to 1½ ft.; bushy, . . . . .	1 50	7 00	
1½ to 2 ft. XX, . . . . .	2 00		
<b>gale</b> (Sweet Gale). 1 to 2 ft. XX,	1 50		
<b>NEMOPANTHES Canadensis</b> (Mountain Holly)—			
1 ft., . . . . .	1 50	7 00	
1 to 1½ ft.; X, . . . . .	2 00	10 00	
<b>PHILADELPHUS coronarius</b> (Mock Orange)—			
1½ to 2 ft., . . . . .	1 00	5 00	
<b>grandiflorus</b> . 1 to 2 ft., . . . . .	1 00	5 00	
<b>POTENTILLA fruticosa</b> . 1½ to 2 ft., . . . . .	1 00		
<b>PRUNUS pumila</b> (Dwarf Cherry). 1 to 2 ft. Coll., . . . . .	1 00		
<b>maritima</b> (Beech Plum). 3 ft., . . . . .	1 50		
<b>PYRUS arbutifolius</b> . 1 to 1½ ft.; X, . . . . .	1 50		
<b>QUERCUS rubra</b> (Red Oak). 2 to 2½ ft.; XX, . . . . .	2 50		
<b>RHAMNUS alnifolius</b> . 1 to 2 ft. Coll., . . . . .	75	4 00	
<b>RHODORA Canadensis</b> —			
8 to 12 in., . . . . .	1 25	6 00	
1 ft.; XX, . . . . .	1 50	8 00	
<b>RHUS aromatica</b> (Fragrant Sumach)—			
8 in.; seedlings, . . . . .	75	3 00	
8 to 12 in.; X, . . . . .	1 00	5 00	
1 to 2 ft.; XX, . . . . .	2 00		
<b>cotinus</b> . 3 ft., . . . . .	1 50		
<b>copallina</b> (Dwarf Sumach). 1 ft. Coll., . . . . .	75	3 00	\$15 00
<b>glabra</b> (Smooth Sumach)—			
2 to 3 ft. Coll., . . . . .	75	3 00	15 00
2 to 3 ft.; trans., . . . . .	1 50	6 00	
<b>typhina</b> (Staghorn Sumach)—			
Coll., . . . . .	75	3 00	15 00
3 to 4 ft., . . . . .	1 50	6 00	
<b>RIBES cynosbati</b> (Wild Gooseberry). 1 to 2 ft., . . . . .	1 25	6 00	
<b>aureum</b> . 2 ft.; yellow, . . . . .	1 00	5 00	
<b>prostratum</b> (Fetid Currant). 1 ft. Coll., . . . . .	75	3 00	
<b>sanguinium</b> (Red fl.). 2 ft., . . . . .	1 25		
<b>ROSA Arkansana</b> (Arkansas Rose). Seedlings, 3 to 6 in., . . . . .	75	4 00	
<b>Blanda</b> (Early Wild Rose). 1 to 2 ft.; X, . . . . .	1 00	5 00	
<b>Carolina</b> (Swamp Rose). 2 ft.; fine, . . . . .	1 00	5 00	
<b>lucida</b> (Dwarf Wild Rose). 1 ft.; X, . . . . .	1 00	5 00	
<b>alba</b> (Pure White). 1 to 2 ft.; X, . . . . .	2 50		
<b>nitida</b> . 1 ft.; X, . . . . .	1 50		
<b>rugosa</b> . 1 to 1½ ft., . . . . .	1 25	6 00	
1½ to 2 ft., . . . . .	1 75		
<b>alba</b> . 1 ft., . . . . .	1 25	6 00	
<b>Yellow Rambler</b> (Aglaia). Double yellow; XX, . . . . .	2 00		
<b>rubiginosa</b> (English Sweetbrier). 1½ to 2 ft., . . . . .	75		
<b>setigera</b> (Prairie Rose). 1½ to 2 ft.; X, . . . . .	1 25	6 00	



	10	100	1,000
<b>ROSA Wichuraiana</b> (New Hardy Creeping Rose). 1 ft.,	\$1 00	\$5 00	
<b>South Orange Perfection</b> (Double White). X,	1 25		
<b>Flanda's Triumph</b> (Clusters of Double White Flowers). X,	1 25		
<b>Universal Favorite</b> (Double Bright Rose Flowers). X,	1 25		
<b>Pink Roamer</b> (Single Pink). X,	1 25		
<b>RUBUS odoratus</b> (Flowering Raspberry). 2 to 3 ft.,	1 00	5 00	
<b>deliciosus</b> . 1 to 2 ft.; pure white flowers,	1 25	6 00	
<b>occidentalis</b> (Black Raspberry). Coll.,	75	3 00	
<b>strigosus</b> (Red Raspberry). 2 ft. Coll.,	75	3 00	
<b>villosus</b> (High Blackberry). 2 ft. Coll.,	1 00		
<b>SAMBUSCUS Canadensis</b> (Common Elder). 2 to 3 ft.,	1 25	6 00	
<b>variegata</b> . 2 ft.,	1 50		
<b>pubens</b> (Red Berried Elder). 2 to 3 ft.,	1 25	6 00	
<b>SPIRÆA Anthony Waterer</b> . 8 to 12 in.,	1 00		
<b>Margaritæ</b> . 1 ft.,	1 25		
<b>opulifolia</b> . 2 to 3 ft.,	75	4 00	
<b>aurea</b> . 2 ft.,	75	4 00	
<b>salicifolia</b> . Flesh colored. 2 ft. Coll.,	75	4 00	
<b>Thunbergii</b> . 1½ ft. X,	1 25	6 00	
<b>tomentosa</b> (Steeple Bush). 1 ft. Coll.,	75	4 00	
<b>aurea</b> . 2 ft.,	1 25	5 00	
<b>Van Houttei</b> . 1½ to 2 ft.,	1 25	5 00	
<b>STAPHYLEA trifolia</b> (Bladder Nut). 2 ft.,	1 25		
<b>SYMPHORICARPUS racemosus</b> . 1½ ft.,	1 00		
var. <b>pauciflorus</b> (Dwarf Snowberry),	1 00		
<b>vulgaris</b> (Indian Currant)—			
1½ ft.,	75	4 00	
3 ft.,	1 25	6 00	
<b>SYRINGA Japonica</b> . 2 ft.,	1 00		
<b>vulgaris</b> . 3 ft.,	1 50		
<b>alba</b> . 2 ft.,	1 00		
<b>President Grey</b> . 2 ft.,	1 50		
<b>VACCINIUM Pennsylvanicum</b> (Dwarf Blueberry)—			
X. Coll.,	75	4 00	
<b>vacillans</b> (Low Blueberry). 1 ft.,	1 25		
<b>VACCINIUM corymbosum</b> (Swamp Blueberry)—			
1 ft.,	1 00	5 00	
<b>VIBURNUM acerifolium</b> (Maple-leaved Viburnum)—			
1 to 1½ ft.,	1 25	6 00	
<b>cassinoides</b> —			
1 ft.; X,	1 25	5 00	
1 to 1½ ft.,	1 50	7 00	
1½ to 2 ft.,	2 00		
<b>dentatum</b> —			
1 ft.,	1 00	5 00	
2 ft.,	1 50	8 00	
2 to 3 ft.; bushy,	2 00	10 00	
<b>lantana</b> (Wayfaring Tree). 1 to 2 ft.,	1 00		
<b>lantanoides</b> (Hobble Bush). 1 to 3 ft. Coll.,	75	4 00	

	10	100	1,000
<b>VIBURNUM Lentago</b> (Sheepberry)—			
1 to 1½ ft., . . . . .	\$1 25	\$6 00	
1½ to 2 ft.; XX, . . . . .	1 50	8 00	
2 to 3 ft.; XX, . . . . .	2 00		
<b>Opulus</b> (Cranberry Tree). 2½ ft., . . . . .	1 50		
2 to 3 ft., . . . . .	1 50		
<b>sterilis</b> (Snowball Tree). 2 to 2½ ft., . . . . .	1 50		
<b>tomentosum</b> . 3 ft.; XX, . . . . .	2 00		
<b>pubescens</b> (Downy Arrow-wood). 1 to 1½ ft., . . . . .	1 25	6 00	
<b>prunifolium</b> . 1 to 2 ft.; XX, . . . . .	1 50		
<b>VITIS cordifolia</b> (Frost Grape). 1 to 2 ft., . . . . .	1 00	5 00	
<b>æstivilis</b> . 1 to 2 ft., . . . . .	1 00	5 00	
<b>Labruska</b> . 1 to 2 ft., . . . . .	1 00	5 00	
<b>Weigela rosea</b> . 1½ ft., X, . . . . .	1 25		

## Evergreen Trees and Shrubs.

	10	100	1,000
<b>ABIES Englemanni</b> . 2 ft., . . . . .	35c each		
3 ft., . . . . .	60c each		
4 ft., . . . . .	75c each		
<b>Canadensis</b> (Hemlock). 1 to 1½ ft.; XX, . . . . .	\$1 50		
<b>nigra</b> (Black Spruce). 1 to 2 ft. Coll., . . . . .	75		
<b>ANDROMEDA polyfolia</b> . 1 ft.; wet places.			
1 to 1½ ft., . . . . .	1 25	\$6 00	
Coll., . . . . .	50	2 00	\$12 00
<b>CASSANDRA calyculata</b> (Leather Leaf)—			
8 to 12 in., . . . . .	1 00	5 00	
1 to 2 ft. Coll., . . . . .	50	2 00	12 00
<b>HYPERICUM patulum</b> . 6 in., X, . . . . .	1 00	5 00	
<b>JUNIPERUS communis</b> (Prostrate Juniper). 1 ft. Coll.,	1 00		
<b>prostrata aurea</b> —			
(Golden). 1 to 1½ ft., . . . . .	2 50		
<b>Hibernica</b> (Irish Juniper). 2 to 3 ft., . . . . .	2 00		
<b>Virginiana</b> (Red Cedar). 1 ft. Coll., . . . . .	1 00		
<b>glauca</b> . 2 ft.; XX, . . . . .	5 00		
<b>KALMIA angustifolia</b> (Sheep Laurel). 1 ft., . . . . .	1 00		
<b>glauca</b> (Pale Laurel). 1 ft., . . . . .	1 00	5 00	
<b>latifolia</b> (Mountain Laurel)—			
12 to 18 in.; X, . . . . .	3 00		
1½ to 2 ft.; XX, . . . . .	6 00		
<b>LEDUM latifolium</b> (Labrador Tea). 8 to 12 in., . . . . .	1 00	5 00	
<b>LEUCOTHOË Catesbæi</b> . 1 ft., . . . . .	1 00	5 00	
<b>MAHONIA aquifolia</b> . 8 to 12 in., . . . . .	1 25	6 00	
<b>PICEA pungens</b> (Col. Blue Spruce)—			
6 to 12 in.; trans., X, . . . . .	2 00		
<b>PINUS strobus</b> (White Pine). 2 ft.; X, . . . . .	2 00	10 00	
<b>RETINOSPORA ericoides</b> —			
2 ft., . . . . .	50c each		
5 ft., . . . . .	\$1.25 each		



	10	100	1,000
<b>RETINOSPORA plumosa</b> —			
1 ft., . . . . .	\$1 50		
2 ft., . . . . .	50c each		
5 ft., . . . . .	\$1.25 each		
<b>plumosa aurea</b> —			
1 ft., . . . . .	1 50		
2 ft., . . . . .	50c each		
5 ft., . . . . .	\$1.25 each		
<b>plicifera aurea.</b> 1 ft., . . . . .	1 50		
<b>RHODODENDRON catawbiense.</b> 1 ft., . . . . .	1 50		
<b>maximum</b> (Great Laurel)—			
8 to 12 in., . . . . .	1 00		
1 to 1½ ft.; strong, . . . . .	2 00		
1½ to 2 ft., . . . . .	3 00		
2 to 3 ft., . . . . .	5 00		
<b>punctatum.</b> 1 to 1½ ft., . . . . .	1 50		
<b>TAXUS Canadensis</b> (American Yew)—			
8 to 12 in.; XX, . . . . .	1 25	\$6 00	
1 to 2 ft. Coll., . . . . .	50	3 00	\$15 00
<b>THUYA occidentalis</b> (Arborvitæ). 2 ft., . . . . .	1 25		
<b>globosa</b> (Globe Arborvitæ). 1½ ft., . . . . .	25c each		
<b>Ellwangeriana.</b> 2 ft.; strong, . . . . .	3 00		

## Vines and Creepers.

	10	100	1,000
<b>AMPELOPSIS quinquefolia</b> (Virginia Creeper)—			
1 to 2 ft. Coll., . . . . .	\$0 75	\$4 00	
<b>BIGNONIA radicans</b> (Trumpet Creeper), . . . . .	1 00	5 00	
<b>CELASTRUS scandens</b> (Bittersweet). 1 to 2 ft. Coll., . . . . .	75	4 00	\$15 00
<b>CLEMATIS coccinea</b> (Scarlet Clematis). Fine, strong,	1 25	6 00	
<b>crispa.</b> Strong, bluish purple flowers, . . . . .	1 25	6 00	
<b>paniculata.</b> Pure white flowers, strong plants, . . . . .	1 25		
<b>Virginiana</b> (Virgin's Bower). Strong. Coll., . . . . .	1 00	4 00	
<b>LONICERA bracypoda.</b> 1 ft., . . . . .	1 00	5 00	
<b>aurea.</b> 1 ft., . . . . .	1 00		
<b>MENISPERMUM Canadense</b> (Canadian Moonseed)—			
Coll., . . . . .	1 00	4 00	
<b>RUBUS hispidus</b> (Running Swamp Blackberry). Coll., . . . . .	50	2 00	10 00
<b>Canadensis</b> (Low Blackberry). Fine fruit. Coll., . . . . .	75	3 00	

## Herbaceous Perennials.

For the most part in the following list of Hardy Herbaceous Perennials, I offer nursery-grown plants. Yet some of the North American Wild Flowers are collected in their native habitat; they are, as a rule, easily transplanted.

1 yr., means transplanted and grown in nursery one year. Coll., collected.

	10	100	1,000
<b>ACHILLEA millefolium roseum,</b> . . . . .	\$0 75	\$4 00	
<b>The Pearl.</b> Pure white, . . . . .	75	4 00	

	10	100	1,000
<b>ACTÆA alba</b> (White Baneberry). Coll.,	\$1 00	\$5 00	
<b>rubra</b> (Red Baneberry). Nice plants. Coll.,	1 00	5 00	
<b>ALYSSUM saxatile compactum</b> —			
1 yr.,	50	3 00	
<b>AMARYLLIS formosissima</b> (Jacobæan Lily). Fire Red,	1 00		
<b>ANEMONE nemorosa</b> . Flowers white. Coll.,	50	3 00	\$15 00
<b>Pennsylvanica</b> . Large white flowers,	75	4 00	
<b>pulsatilla</b> . 2 yrs.; large blue flowers,	1 00		
<b>Japonica</b> . Single; 1 yr. XX,	1 00		
<b>“Whirlwind.”</b> Double white; 1 yr.,	1 00		
<b>ANTHEMIS tinctoria</b> (Golden Marguerite). 1 yr.,	75	4 00	
<b>APIOS tuberosa</b> (Wild Bean). Purple flowers. Coll.,	25	1 00	8 00
<b>AQUILEGIA alpina</b> . 1 to 2 ft; flowers blue; 1 yr.,	1 00	4 00	
<b>chrysantha</b> . Large yellow; 1 yr.,	75	4 00	
<b>vulgaris</b> . 1 yr.,	75	4 00	
<b>Canadensis</b> . Red and yellow,	1 00	4 00	
<b>Skinneri</b> . 2 yrs.,	1 50		
<b>ARABIS albidia</b> . 1 yr; white,	75		
<b>ARISÆMA triphyllum</b> (Wild Turnip),	50	3 00	
<b>ASARUM Canadensis</b> (Wild Ginger). Purple flowers,	50	3 00	15 00
<b>ASCLEPIAS incarnata</b> . Flowers purple, showy. Coll.,	50	3 00	
<b>tuberosa</b> . 3 yrs.,	1 00	5 00	
<b>ASTER ericoides</b> . Flowers white, on wand-like stems.			
Coll.,	75	4 00	15 00
<b>lævis</b> . Large dark blue flowers. Coll.,	75	4 00	
<b>multiflorus</b> . Small white flowers; fine. Coll.,	75	4 00	15 00
<b>Novæ Angliæ</b> (N. E. Aster). Large purple			
flowers. 2 yrs., X,	1 00	5 00	
<b>patens</b> . Flowers deep purple; low growing. Coll.,	75	4 00	
<b>BAPTISIA tinctoria</b> . Yellow; dry soils. Coll.,	1 00	4 00	
<b>CALLIRRHÖE involucreta</b> . Flowers large, crimson,			
fine,	1 00		
<b>Cusickii</b> . 2 ft.; light blue, large bulbs,	1 50		
<b>CAMPANULA Carpatica</b> . 2 yrs.; X,	1 00	5 00	
<b>alba</b> . 1 yr.; X,	1 00	5 00	
<b>elegans</b> —			
2 ft.; 1 yr. Deep blue,	1 00	5 00	
2 yrs.,	1 50		
<b>medium</b> (Canterbury Bells). 1 yr.,	75	4 00	
<b>pyramidalis</b> . 1 yr.,	1 00	4 00	
<b>alba</b> . 2 yrs.; X,	1 25	5 00	
<b>Van Houttei</b> . 2 yrs.,	1 00	5 00	
<b>rotundifolia</b> (Harebell). Strong,	1 25	5 00	
<b>CASSIA Marilandica</b> (American Senna). 3 ft., yellow, X,	1 00	4 00	
<b>CAULOPHYLLUM thalictroides</b> (Blue Cohosh),	75	4 00	
<b>CHELONE glabra</b> (Snake-Head). White flowers. Coll.,	75	4 00	
<b>CHIMAPHILA maculata</b> (Spotted Wintergreen). Coll.,	75	4 00	
<b>CHRYSANTHEMUM</b> (Pompon Varieties)—	1 00		
<b>Maid of Honor</b> . Deep Rose,	1 00		
<b>Drin Drin</b> . Smallest, bright orange,	1 00		
<b>Daybreak</b> . Rosy shell pink,	1 00		



	10	100	1.000
<b>CHRYSANTHEMUM</b> <i>Druid Hill</i> . Light mahogany crimson, . . . . .	\$1 00		
<b>St. Illoria</b> . Silvery pink, . . . . .	1 00		
<b>Soiur Nuianie</b> . Pure white. Dwarf, . . . . .	1 00		
<b>CIMICIFUGA</b> <i>racemosa</i> (Black Snake-root). White flowers, . . . . .	1 00	\$5 00	
<b>CLAYTONIA</b> <i>Virginica</i> (Spring Beauty), . . . . .	50	3 00	
<b>CLINTONIA</b> <i>borealis</i> . Coll., . . . . .	50	3 00	
<b>CONVALLARIA</b> <i>majalis</i> (Lily of the Valley), . . . . .	1 00	4 00	
<i>majalis</i> . Large fine clumps, . . . . .	2 50	10 00	
<b>COPTIS</b> <i>trifolia</i> (Goldthread). Small white flowers, . . . . .	75	3 00	
<b>CORNUS</b> <i>Canadensis</i> (Dwarf Cornel). Fine clumps. Coll., . . . . .	1 25	5 00	
<b>DELPHINIUM</b> <i>grandiflorum</i> (Larkspur). Low grow- ing, very beautiful. 2 yrs., . . . . .	1 00	4 00	
<i>grandiflorum</i> . Very large flowers, . . . . .	1 00	4 00	
<i>formosum</i> . Tall, 4 to 6 ft. 2 yrs., . . . . .	1 00	5 00	
<b>DENTARIA</b> <i>diphylla</i> (Pepper Root), . . . . .	50	3 00	
<i>laciniata</i> . Flowers pale purple, . . . . .	75	4 00	
<b>DIANTHUS</b> <i>barbatus</i> (Sweet William). 1 yr., . . . . .	75	4 00	
<i>plumarius</i> . 1 yr., . . . . .	75	4 00	
<b>Double Pink</b> . Fine. 1 yr., . . . . .	75		
<b>Single Pink</b> . 1 yr., . . . . .	75		
<b>Her Majesty</b> . 1 yr., . . . . .	1 00		
<b>Mrs. Simkins</b> . 1 yr., . . . . .	75	4 00	
<b>DICENTRA</b> <i>eximia</i> . Beautiful flowers; large; 2 yrs.; X, . . . . .	1 00	5 00	
<b>DIGITALIS</b> <i>gloxonoides</i> . 1 yr., . . . . .	75	4 00	
<b>DODECATHEON</b> <i>Meadia</i> (Shooting Star). Fine plants, . . . . .	1 00	5 00	
<b>EPIGÆA</b> <i>repens</i> (Trailing Arbutus). Fine plants. Coll., . . . . .	1 00	5 00	
<b>EPILOBIUM</b> <i>angustifolium</i> . Coll., . . . . .	75	4 00	
<b>ERYTHRONIUM</b> <i>Americanum</i> (Dog's Tooth Violet)— Bright yellow flowers. Coll., . . . . .	75	4 00	
<b>EUPATORIUM</b> <i>ageratoides</i> (White Snakeroot). Coll., . . . . .	50	3 00	\$15 00
<b>EUPHORBIA</b> <i>corollata</i> (Flowering Spurge). Fine; white, . . . . .	75	4 00	
<b>GAILLARDIA</b> <i>grandiflora</i> . 1 yr., . . . . .	75	4 00	
<b>GALAX</b> <i>aphylla</i> . Evergreen, tinted leaves, white flowers, . . . . .	1 00	5 00	
<b>GAULTHERIA</b> <i>procumbens</i> (Wintergreen)— Clumps. Coll., . . . . .	1 00	5 00	
<b>GENTIANA</b> <i>Andrewsii</i> (Closed Gentian). Dark blue, . . . . .	1 00	5 00	
<b>GERANIUM</b> <i>maculatum</i> (Crane's-bill). Coll., . . . . .	50	3 00	

### "MIELLEZ'S REVELATION" IN LILY OF THE VALLEY.

It is of extraordinary size and vigor, of the most exquisite fragrance, and does well under all conditions and in all sorts of soils, growing just as well in full sun as partial shade. It is extremely hardy, and while not increasing quite as fast as the common kinds, is still of good increase. It is well to cover it in December with a good coat of barnyard manure—cow or horse—green is just as good as old. Leave it in the spring to serve as mulch. The Massachusetts Horticultural Society awarded it a "First-Class Certificate of Merit" on May 22, 1897. \$1 per 10, \$5 per 100.



	10	100	1,000
<b>GYPSOPHILA paniculata.</b> 2 yrs., . . . . .	\$1 00	\$5 00	
<b>HEPATIC A triloba.</b> Round leaved, flowers early. Coll.,	75	3 00	
<b>alba.</b> White, . . . . .	1 25		
<b>HELENIUM autumnale.</b> 2 yrs., . . . . .	1 00		
<b>HEMEROCALLIS flava.</b> Clumps, strong, . . . . .	1 50	8 00	
<b>HEUCHERA sanguinea.</b> Fire red, large. 1 yr., . . . . .	1 00	5 00	
<b>HIBISCUS Moscheutos rosea</b> —			
Flowers large, rose colored. 2 yrs., . . . . .	1 00	5 00	
<b>Crimson Eye</b> —			
Flowers pure white, crimson eye. 1 yr., . . . . .	1 00	5 00	
<b>HOLLYHOCKS, Double.</b> Pink, salmon, white, crim-			
son. 1 yr. X, . . . . .	75	4 00	
Many colors, mixed, double, . . . . .	75	4 00	
<b>HOUSTONIA cœrulea</b> (Bluets)—			
White and purple; tufts. Coll., . . . . .	25	2 00	
<b>purpurea.</b> Waxy white flowers; clumps, . . . . .	75	4 00	
<b>HYDRASTIS Canadensis</b> (Orange Root). Rare, . . . . .	75	4 00	
<b>IBERIS sempervirens.</b> 1 yr., . . . . .	75	4 00	
<b>IRIS cristata.</b> Light blue flowers. 6 in., XX, . . . . .	1 00	5 00	
<b>pumila</b> (Dwarf Iris)—			
Purple flowers, early. 3 to 6 in. 2 yrs., . . . . .	1 00	5 00	
<b>alba.</b> 2 yrs., . . . . .	1 00	5 00	
<b>azurea.</b> Blue. 2 yrs., . . . . .	1 00	5 00	
<b>sulphurea.</b> 2 yrs., . . . . .	1 00	5 00	
<b>Siberica.</b> Dark blue or white. 1 to 3 ft. Clumps, . . . . .	1 00	5 00	
<b>verna.</b> Crested yellow, low growing, . . . . .	1 00	5 00	
<b>versicolor.</b> Large blue flowers. 1 to 2 ft. Coll., . . . . .	50	3 00	\$15 00
<b>Kœmpferi</b> (Japan Iris). Named sorts, XX, . . . . .	1 50	10 00	
<b>LIATRIS graminifolia.</b> Coll., . . . . .	75	4 00	
<b>pycnostachya</b> (Kansas Gay Feather). Fine, . . . . .	1 00	5 00	
<b>scariosa</b> (Button Snakeroot). 2 to 5 ft., . . . . .	1 00	5 00	
<b>spicata</b> (Spiked Blazing Star), . . . . .	1 00	5 00	
<b>LILIUM auratum.</b> Home grown. 7 to 9 in., . . . . .	1 25		
<b>Canadense.</b> Nice bulbs, . . . . .	75	4 00	
<b>concolor,</b> . . . . .	75		
<b>Humboldtii.</b> 3 to 6 ft. Reddish orange flowers, . . . . .	1 50		
<b>Martagon,</b> . . . . .	1 25		
<b>pardalinum,</b> . . . . .	75		
<b>Philadelphicum</b> (Wild Orange Red Lily), . . . . .	75	4 00	
<b>superbum.</b> Tall. 4 to 8 ft. Many flowers, . . . . .	1 00	5 00	
<b>tenuifolium.</b> Fine bulbs, . . . . .	1 50	7 00	
<b>Wallacei,</b> . . . . .	75		
<b>LINNÆA borealis,</b> . . . . .	75	4 00	
<b>LINUM Austriacum.</b> 1 yr., . . . . .	75		
<b>LOBELIA cardinalis</b> (Cardinal Flower). Flowers red.			
Coll., . . . . .	75	3 00	
<b>syphilitica</b> (Great Blue Lobelia). Fine plants, . . . . .	75	3 00	
<b>LUPINUS perennis</b> (Wild Lupine). Coll., . . . . .	50	3 00	
<b>LYCHNIS Haageana.</b> Scarlet. 1 yr., . . . . .	75		
<b>chalcedonica.</b> 2 yrs., . . . . .	1 00	5 00	
<b>viscaria splendens</b> (Ragged Robin). 2 yrs., . . . . .	1 00	5 00	
<b>LYTHRUM roseum superbum.</b> 3 yrs.; strong, . . . . .	1 50	8 00	
seedlings, . . . . .	50	3 00	25 00
<b>LYSIMACHIA nummularia</b> (Creeping Jenny). Coll., . . . . .	25	2 00	8 00
<b>MERTENSIA Virginica</b> (Virginia Cowslip). Established, . . . . .	1 00	5 00	
<b>MITCHELLA repens</b> (Partridge Berry). Clumps. Coll., . . . . .	1 00	4 00	25 00
<b>MITELLA diphylla</b> (Bishop's Cap). Nice for rockery, . . . . .	50	3 00	
<b>MONARDA didyma.</b> Bright red flowers, . . . . .	75	4 00	
<b>MYOSOTIS palustris</b> (Forget-Me-Not). Flowering plants, . . . . .	50	3 00	
<b>OENOTHIRA fruticosa major.</b> 2 yrs.; large yellow, . . . . .	1 00	5 00	
<b>speciosa.</b> 2 yrs.; white, . . . . .	1 00		
<b>OXALIS acetosella.</b> White flowers; purple veins, . . . . .	50	3 00	
<b>violacea.</b> Flowers pink; fine dark foliage, . . . . .	50	3 00	

	10	100	1,000
<b>PAEONIA sinensis rosea.</b> Clumps, . . . . .	\$2 00	\$10 00	
white. Clumps, . . . . .	2 00	10 00	
red. Clumps, . . . . .	2 00	10 00	
<b>PARNASSIA Caroliniana.</b> Large white flowers. Coll., . . . . .	50	3 00	\$15 00
<b>PHLOX reptans.</b> Red, . . . . .	1 00	4 00	
<b>divaricata.</b> Blue, . . . . .	1 00	4 00	
<b>aemona</b> (Dwarf Phlox), . . . . .	1 00	5 00	
<b>pilosa,</b> . . . . .	1 00	5 00	
<b>subulata</b> (Moss Pink), . . . . .	.75	4 00	
<b>alba.</b> Pure White, . . . . .	.75	4 00	
<b>PHLOX HYBRID (dicussata)</b> —			
<b>BRILLIANT.</b> Fiery red, overlaid salmon, large truss.			
<b>COQUELICOT.</b> Fiery scarlet, dwarf.			
<b>LOTHAIR.</b> Brilliant salmon red, carmine eye.			
<b>JOAN OF ARC.</b> Large panicles of pure white, dwarf.			
<b>CONCOURSE.</b> Rosy carmine, fire colored center.			
<b>LIBERTE.</b> Clear salmon, large flowers, tall.			
strong stock, . . . . .	1 25		
<b>PHLOX dicussata</b> in mixed sorts, strong, . . . . .	1 25	6 00	
<b>PODOPHYLLUM peltatum</b> (Mandrake), . . . . .	1 00		
<b>POLYGALA paucifolia</b> (Fringed Polygala). Coll. clumps, . . . . .	1 00		
<b>POLYGANATUM biflorum</b> (Solomon's Seal), . . . . .	.75	4 00	
<b>PYRETHRUM corymbosum.</b> 2 ft., white flowers, . . . . .	1 00	5 00	
<b>uliginosum</b> (Great Ox-eye Daisy). XX, . . . . .	1 25	5 00	
<b>roseum hybridum,</b> . . . . .	1 00		
<b>PRIMULA auricula.</b> 2 yrs., . . . . .	1 00	5 00	
<b>veris.</b> Mixed. 2 yrs., X, . . . . .	1 00	5 00	
<b>vulgaris.</b> 2 yrs; X, . . . . .	1 00	5 00	
<b>RHEXIA Virginica</b> (Meadow Beauty), . . . . .	.75	3 00	
<b>RUDBECKIA lanceolata</b> (Golden Glow). Clumps; XX, . . . . .	1 00	5 00	
<b>SANGUINARIA Canadensis</b> (Blood Root). Coll., . . . . .	50	3 00	
<b>SEDUM acre.</b> Yellow flowers, . . . . .	50	3 00	
<b>SHORTIA galacifolia.</b> XX, . . . . .	1 50	7 00	
<b>SILENE Virginica</b> (Fire Pink). XX, . . . . .	1 00	5 00	
<b>SMILACINA racemosa</b> (False Solomon's Seal), . . . . .	.75	4 00	
<b>SOLIDAGO odora</b> (Sweet Goldenrod). Very desirable for open places, especially near the sea, . . . . .	1 00	5 00	
<b>SPIRÆA lobata.</b> 3 to 4 ft. Clumps, XX, . . . . .	1 50		
<b>Japonica.</b> Strong clumps, XX, . . . . .	1 50	8 00	
<b>SHASTA Daisy.</b> 1 yr., X, . . . . .	1 00		
<b>STOKSIA Cyanea</b> (Cornflower Aster), . . . . .	1 00		
<b>STREPTOPUS roseus</b> (Twisted Stalk)— Small rose flowers, . . . . .	1 00	4 00	
<b>THALICTRUM anemonoides</b> (Rue Anemone)— 9 in. White, . . . . .	.75	3 00	
<b>dioicum.</b> 1 to 2 ft. Purple flowers, desirable, . . . . .	.75	4 00	
<b>cornuti</b> (Tall Meadow Rue): 2 to 3 ft. White flowers, . . . . .	.75	4 00	
<b>TIARELLA cordifolia.</b> 6 in. Small white flowers, . . . . .	50	3 00	
<b>TRADESCANTIA Virginica</b> (Spiderwort). Flowers blue, . . . . .	.75	4 00	
<b>TRILLIUM cernuum.</b> Nodding white flowers. 1 ft., . . . . .	.75	4 00	
<b>grandiflorum.</b> Pure white flowering bulbs, . . . . .	50	2 00	12 00
<b>erectum.</b> Dark purple flowers, fine bulbs, . . . . .	.75	3 00	
var. <b>album.</b> Greenish white flowers, . . . . .	1 00	4 00	
<b>recurvatum.</b> Leaves spotted, purple flowers, . . . . .	1 00	4 00	
<b>sessile.</b> Flowers dark purple, desirable, . . . . .	1 00	4 00	
var. <b>Californicum.</b> Large white flowers, . . . . .	1 25		
<b>erythrocarpum</b> (Painted Trillium). Coll., . . . . .	1 00	5 00	
<b>UVULARIA grandiflora</b> (Large Bellwort). Yellow flowers, . . . . .	50	3 00	15 00
<b>perfoliata.</b> Smaller than the last, . . . . .	50	3 00	15 00
<b>sessilifolia.</b> Sessile leaves, pretty, . . . . .	50	3 00	15 00
<b>VERNONIA noveboracensis</b> (Iron Weed). 3 to 5 ft. Purple flowers in small heads, . . . . .	1 00	5 00	

	10	100	1,000
<b>VIOLA Canadensis</b> . White and purple flowers, . . . . .	\$0 75	\$4 00	
<b>English Violet Czar</b> . Hardy double, very sweet, double, . . . . .	1 00	5 00	
<b>California Violet</b> , . . . . .	1 00		
<b>pubescens</b> . Flowers yellow, dry soils. Coll., . . . . .	1 00	4 00	
<b>rotundifolia</b> . Flowers yellow, moist soils. Coll., . . . . .	75	4 00	
<b>blanda</b> (Sweet White Violet). Wet open places, . . . . .	75	4 00	
<b>canina</b> , var. <b>sylvestris</b> (Dog Violet). Blue. Coll., . . . . .	75	4 00	\$10 00
<b>cuculata</b> , . . . . .	75	4 00	
<b>pedata</b> (Bird's Foot Violet). Large blue flowers; delights in a sandy soil; clumps, . . . . .	1 00	4 00	
var. <b>bicolor</b> . Beautiful flowers, . . . . .	1 00	4 00	
<b>VINCA minor</b> (Common Periwinkle). Nursery grown, . . . . .	75	3 00	20 00
var. <b>alba</b> . Pure white flowers; fine, . . . . .	1 00	5 00	

### PANSY PLANTS.

20 ets. per doz., \$1.00 per 100, \$7.00 per 1,000.

Transplanted and grown in open ground in nursery rows. Extra fine strain in named sorts—Fire King, Mahogany, Striped and Mottled, Cardinal Red, Fawn Color, White Treasure, Blue, Yellow Gem, Peacock, Lord Beaconsfield.

### BOG AND AQUATIC PLANTS.

	10	100	1,000
<b>ACORUS Calamus</b> (Sweet Flag). 2 ft. Coll., . . . . .	\$0 75	\$3 00	\$15 00
<b>variegatus</b> . Leaves striped with white, . . . . .	1 25		
<b>BRASENIA peltata</b> . Small floating leaves; water. Coll., . . . . .	75	3 00	15 00
<b>CALLA palustris</b> (American Calla). Fine for bog. Coll., . . . . .	75	3 00	
<b>CALTHA palustris</b> . Large yellow flowers. Bog or garden, . . . . .	75	3 00	
<b>DARLINGTONIA Californica</b> (Cal. Pitcher Plant), . . . . .	2 00		
<b>DIONÆA muscipula</b> (Venus' Fly Trap). Flowers white, . . . . .	1 00	4 00	
<b>DROSER filiformis</b> (Thread-Leaved Sundew). Neat, <b>longifolia</b> . Small white flowers. Bog, . . . . .	50	3 00	
<b>rotundifolia</b> . Round leaves. Bog, . . . . .	50	3 00	
<b>HELONIAS bullata</b> (Stud Flower). Beautiful pink flowers, . . . . .	1 00	5 00	
<b>LIMNANTHEMUM lacunosum</b> (Floating Heart)— Water. Coll., . . . . .	75	4 00	
<b>MENYANTHES trifoliata</b> (Buck Bean). Coll., . . . . .	50	3 00	15 00
<b>NASTURTIUM officinale</b> (True Water Cress). Coll., . . . . .	50	2 00	10 00
<b>NESÆA verticillata</b> . A fine water shrub. Coll., . . . . .	75	4 00	15 00
<b>NUPHAR advena</b> (Common Yellow Lily). Large roots. Coll., . . . . .	1 00	5 00	
<b>NYMPHÆA odorata</b> (White Water Lily). Large roots. Coll., . . . . .	1 00	5 00	30 00
<b>minor</b> . Smaller flowers. Coll., . . . . .	1 00	5 00	
<b>ORONTIUM aquaticum</b> . Small plants, velvety leaves. Coll., . . . . .	75	4 00	
<b>PELTANDRA Virginica</b> (Water Arum). A fine water plant, . . . . .	1 00	5 00	
<b>PONTEDERIA cordata</b> . Spikes of blue flowers in water. Coll., . . . . .	1 00	5 00	
<b>SARRACENIA purpurea</b> (Pitcher Plant). Red flowers. Coll., . . . . .	75	3 00	
<b>flava</b> (Trumpet Leaf). Flowers yellow; large plants, . . . . .	1 00	5 00	
<b>Drummondii</b> . Flowers purple; leaves 1 to 2 ft., . . . . .	2 00	10 00	



	10	100	1,000
<b>SARRACENIA Psittacina</b> (Parrot-Beaked Pitcher Plant).			
Flowers purple, . . . . .	\$2 00	\$10 00	
<b>rubra</b> (Red-Flowered Trumpet Leaf). Fine; clumps, . . . . .	1 50	6 00	
<b>variolaris</b> . Spotted-leaved; flowers yellow, . . . . .	1 50	6 00	
<b>TYPHA latifolia</b> (Cat-Tail). 2 to 4 ft. Coll., . . . . .	75	4 00	
<b>VACCINIUM macrocarpon</b> (American Cranberry). Coll., . . . . .	25	1 50	\$5 00

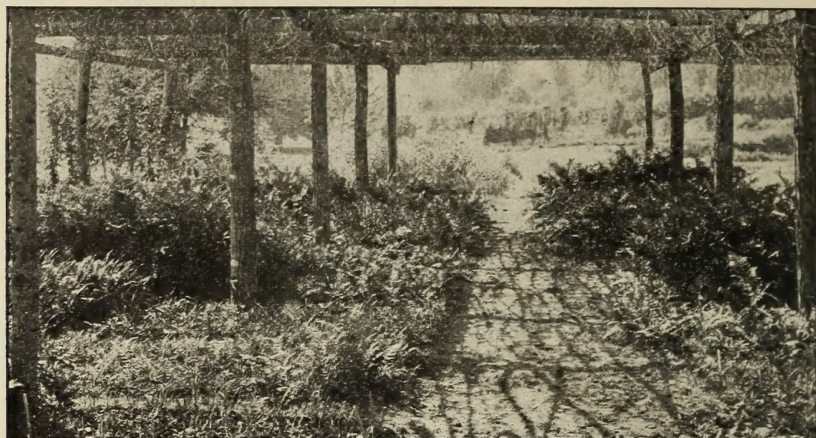
### SHRUBS DESIRABLE FOR THE BOG GARDEN.

<b>Andromeda polifolia</b> . 1 ft.	<b>Ledum latifolium</b> . 2 ft.
<b>Azalea viscosa</b> . 4 to 10 ft.	<b>Nemopanthes Canadensis</b> . 4 ft.
<b>Cassandra calyculata</b> . 1 ft.	<b>Nesæa verticillata</b> . 2 ft.
<b>Cephalanthus occidentalis</b> . 4 ft.	<b>Pyrus arbutifolia</b> . 5 ft.
<b>Ilex verticillata</b> . 3 ft.	<b>Rhodora Canadensis</b> . 1 ft.
<b>Kalmia angustifolia</b> . 1 ft.	<b>Vaccinium stramineum</b> . 3 ft.
<b>glauca</b> . 2 ft.	<b>corymbosum</b> . 5 to 10 ft.

### ORCHIDS.

I offer in the following list of Orchids the greater share of the most desirable for cultivation found in the United States. Most of them are taken from their native habitat and transplanted into soil best adapted for their growth.

	10	100	1,000
<b>Aplectrum hyemale</b> . Fine for moist shades, . . . . .	\$1 00	\$5 00	
<b>Arethusa bulbosa</b> , . . . . .	1 00		
<b>Calopogon pulchellus</b> . Desirable for the bog. Coll., . . . . .	50	3 00	
<b>Calypso borealis</b> . Showy pink flowers; damp shades. Coll., . . . . .	1 00	5 00	
<b>Cypripedium acaule</b> (Red Lady Slipper). Dry shades, . . . . .	1 00	5 00	
<b>Californicum</b> , . . . . .	3 00	15 00	
<b>candidum</b> . White, . . . . .	2 00	10 00	
<b>fasciculatum</b> , . . . . .	3 00	15 00	
<b>montanum</b> . White, . . . . .	1 50	8 00	
<b>parviflorum</b> . Small yellow, . . . . .	1 50	8 00	
<b>pubescens</b> . Large yellow. Fine, . . . . .	1 50	8 00	
<b>SPECTABILE</b> . Large white and pink—			
1-3 crown, . . . . .	2 00	10 00	
3-6 crown, X, . . . . .	3 00	15 00	
<b>Goodyera Menziesii</b> . Flowers white, leaves spotted. Coll., . . . . .	1 00	5 00	
<b>pubescens</b> . Good stock. Coll., . . . . .	50	3 00	\$15 00
<b>repens</b> , . . . . .	1 00		
var. Bright markings, . . . . .	1 00		
<b>Habenaria blepharoglottis</b> (White-Fringed Orchid), . . . . .	1 50		
<b>bracteata</b> . Greenish, . . . . .	1 00		
<b>ciliaris</b> . Beautifully fringed; yellow, . . . . .	1 25	6 00	
<b>dilatata</b> . White, . . . . .	1 25	6 00	
<b>Hookeri</b> . Flowers greenish, . . . . .	1 25	6 00	
<b>hyperborica</b> . White, . . . . .	1 25		
<b>obtusata</b> . Small greenish, . . . . .	75	4 00	
<b>psychodes</b> . Purple fringed, . . . . .	1 25	6 00	
<b>Liparis liliifolia</b> . 4 in. Purplish flowers; moist shades, . . . . .	75	4 00	
<b>Læselii</b> . Flowers greenish yellow; wet soils, . . . . .	75	4 00	
<b>Listera convallarioides</b> , . . . . .	1 00		
<b>Orchis spectabilis</b> (Showy Orchid). Pink-purple flowers, . . . . .	1 00	5 00	
<b>Pogonia ophioglossoides</b> . A bog plant with pale rose flowers, . . . . .	75	4 00	15 00
<b>Spiranthes cernua</b> (Ladies' Tresses). Flowers white, . . . . .	50	3 00	
<b>Romanzoviana</b> . X, . . . . .	1 00		



FERN BOWER AT THE GILLETT NURSERIES.

## FERNS.

The Ferns of New England are among the most charming of our *hardy perennials*. They are so easily grown that every park or yard may have them. If you wish to beautify a dark nook shut in by buildings or trees, where flowers will not thrive, try a few ferns and note the change. You can select from my list of about 40 kinds those suited for almost any situation that will sustain plant life.

	10	100	1,000
<b>Adiantum pedatum</b> (Maidenhair). Graceful; clumps,	\$0 75	\$4 00	\$25 00
<b>Aspidium acrostichoides</b> (Christmas Fern). Evergreen,	50	3 00	15 00
<b>acutum</b> , var. <b>Braunii</b> . Evergreen. 1 to 2 ft.,	1 25	6 00	
<b>Boottii</b> . Intermediate between <i>A. cristatum</i> and <i>A.</i>			
<i>spinulosum</i> ,	1 25	6 00	
<b>crisatum</b> . A low evergreen; moist shades,	75	4 00	
var. <b>Clintonianum</b> . Much larger,	1 00	5 00	
<b>Filix-mas</b> (Male Fern). Beautiful and rare,	1 25	7 00	
<b>Goldianum</b> . Broad, light green fronds. 2 to			
4 ft.,	1 25	7 00	
<b>marginale</b> . Dark evergreen; rocky places,	75	3 00	
<b>munitum</b> . An evergreen from Oregon,	1 25	6 00	
<b>Noveboracense</b> . Moist, shady places,	75	3 00	
<b>spinulosum</b> . A finely cut evergreen,	75	4 00	20 00
var. <b>dilatatum</b> . Broad fronds,	1 25	6 00	
<b>Thelypteris</b> . Wet, open places; 1 ft.,	50	3 00	
<b>Asplenium angustifolium</b> . Rich shades. 1 to 3 ft.,	1 00	5 00	
<b>ebeneum</b> . Rocky places; dark stripes; 6 to 12 in.,	50	3 00	15 00
<b>Filix-femina</b> . Fine tall fern; easily grown,	75	4 00	15 00
<b>thelypteroides</b> ,	75	4 00	
<b>Trichomanes</b> . Evergreen; in tufts; 3 to 6 in.,	50	3 00	
<b>Botrychium ternatum dissectum</b> . Fine cut leaves.			
Coll.,	75	4 00	
<b>obliquum</b> . Oblique-leaved. Coll.,	75	4 00	
<b>Virginicum</b> . Light green; shades; 6 to 12 in.,	75	4 00	
<b>Camptosorus rhizophyllus</b> (Walking Leaf). Fine,	50	3 00	15 00
<b>Cheilanthes vestata</b> . Evergreen; south; 2 to 12 in.,	1 00	4 00	
<b>Cryptogramma acrostichoides</b> . Fine clumps; 4 to 8 in.,	1 25	5 00	
<b>Cystopteris bulbifera</b> . Bright green fern; moist soil,	50	3 00	
<b>fragilis</b> . Finely cut fronds; rocks,	50	3 00	15 00

(We have nearly 30,000 of these hardy ferns growing in our nursery, and can usually meet any demands.)





CLUMP OF FERNS IN SHADY CORNER.

	10	100	1,000
<b>Dicksonia punctilobula.</b> Forms large patches. 2 to 3 ft.,	\$0 75	\$3 00	\$12 00
<b>Lygodium palmatum</b> (Climbing Fern). Climbing over bushes. 1 to 3 ft. Coll.,	1 25	5 00	
<b>Onoclea sensibilis</b> (Sensitive Fern). Wet soils. 1 to 2 ft.,	50	3 00	15 00
<b>struthiopteris</b> (Ostrich Fern). Fine. 1 to 6 ft.,	1 25	6 00	12 00
<b>Ophioglossum vulgatum</b> (Adder's Tongue). Coll.,	75	4 00	
<b>Osmunda gracilis</b> (Flowering Fern). Large plants. Coll.,	1 00	5 00	
<b>Claytoniana.</b> Large clumps. 1 to 5 ft. Coll.,	1 00	5 00	
<b>cinnamomea</b> (Cinnamon Fern). 1 to 6 ft. Coll.,	1 00	5 00	
<b>Pellaea atropurpurea</b> (Cliff Brake). Dry cliffs, X,	1 25	6 00	
<b>densa</b> (Oregon Cliff Brake). Clumps. Coll.,	1 00	5 00	
<b>gracilis.</b> Fine for rock garden. 2 to 6 in.,	1 00	5 00	
<b>Phegopteris Dryopteris</b> (Beech Fern). 6 to 10 in. Neat,	75	4 00	
<b>hexagonoptera.</b> Broad fronds. 7 to 12 in.,	75	4 00	
<b>polypodoides.</b> Smaller and darker. 4 to 8 in.,	75	4 00	
<b>Polypodium vulgare</b> (Polypody). Evergreen, on rocks. 3 to 6 in.,	50	3 00	
<b>falcatum.</b> From Oregon. Graceful. 6 to 15 in.,	1 25	5 00	
<b>Woodsia ilvensis.</b> Dry, exposed rocks. Clumps,	1 00	5 00	
<b>obtusa.</b> Rocks. Neat. 6 to 12 in.,	75	4 00	
<b>Woodwardia angustifolia</b> (Chain Fern). Wet soils. Fine plants,	1 00	5 00	
<b>Virginica.</b> Wet soils. 2 to 3 ft. Coll.,	1 00	4 00	20 00

## Club Mosses.

	10	100	1,000
<b>Lycopodium dendroidum</b> (Ground Pine). Used extensively as Christmas green. 4 to 8 in. Coll.,	\$1 00	\$5 00	
<b>lucidulum</b> (Shining Club Moss). 3 to 8 in. Coll.,	75	3 00	
<b>Selaginella apus.</b> Light green creeper. Wet soils. Coll.,	50	3 00	\$15 00
<b>rupestris.</b> Little tufts, dry soils. 1 to 3 in. Coll.,	75	4 00	



## Special Collection of Ferns.

The following collection of Ferns are made up to help in selecting for special wants, and should go by express or freight.

### No. 1.—(\$3 00) For Open Sun Culture.

This collection is desirable for the open border, and, all being rather tall, can be grown as single specimens or for massing with or without flowers.

6 <i>Onoclea struthiopteris</i> ,	24 <i>Dicksonia punctilobula</i> ,
6 <i>Osmunda Claytoniana</i> ,	6 <i>Lygodium palmatum</i> .

### No. 2.—(\$3.00) For Dry, Shady Places.

These Ferns will grow in a dry, shady place. Plant them where flowers as a rule do not thrive.

12 <i>Aspidium acrostichoides</i> ,	12 <i>Dicksonia punctilobula</i> ,
12 <i>Aspidium marginale</i> ,	12 <i>Osmunda Claytoniana</i> .

### No. 3.—(\$3.00) For Moist, Shady Places.

This collection is very fine and easily handled in moist, shady places, also for large rockery.

6 <i>Adiantum pedatum</i> ,	6 <i>Asplenium thelypteroides</i> ,
6 <i>Aspidium cristatum</i> ,	6 <i>Asplenium Filix-fœmina</i> ,
6 <i>Aspidium acrostichoides</i> ,	6 <i>Phegopteris hexagonoptera</i> ,
6 <i>Aspidium spinulosum</i> ,	6 <i>Woodwardia angustifolia</i> .
6 <i>Aspidium marginale</i> ,	

### No. 4.—(\$3.00) For Wet, Open Ground.

These Ferns are very useful for border of a lake or low, wet ground.

12 <i>Aspidium Thelypteris</i> ,	12 <i>Osmunda regalis</i> ,
12 <i>Onoclea sensibilis</i> ,	12 <i>Woodwardia Virginica</i> .

### No. 5.—(\$3.00) Low Evergreen Ferns for Rockery in Shade.

This is a beautiful collection of low-growing Ferns and easily managed.

12 <i>Asplenium ebeneum</i> ,	12 <i>Polypodium vulgare</i> ,
12 <i>Asplenium Trichomanes</i> ,	6 <i>Woodsia obtusa</i> .
12 <i>Comptosorus rhizophyllus</i> ,	

### No. 6.—(\$3.00) Low Evergreen Ferns for Dry, Rocky Ledge.

12 <i>Asplenium Trichomanes</i> ,	12 <i>Polypodium vulgare</i> ,
12 <i>Cheilanthes vestata</i> ,	12 <i>Woodsia Ilvensis</i> .

One-Half Any One of the Above Collections for \$1.75.

You will notice that some kinds are named in more than one collection. Such seem to thrive equally well in the localities named.

Address,

EDWARD GILLET'T,

Southwick, Mass., U. S. A.